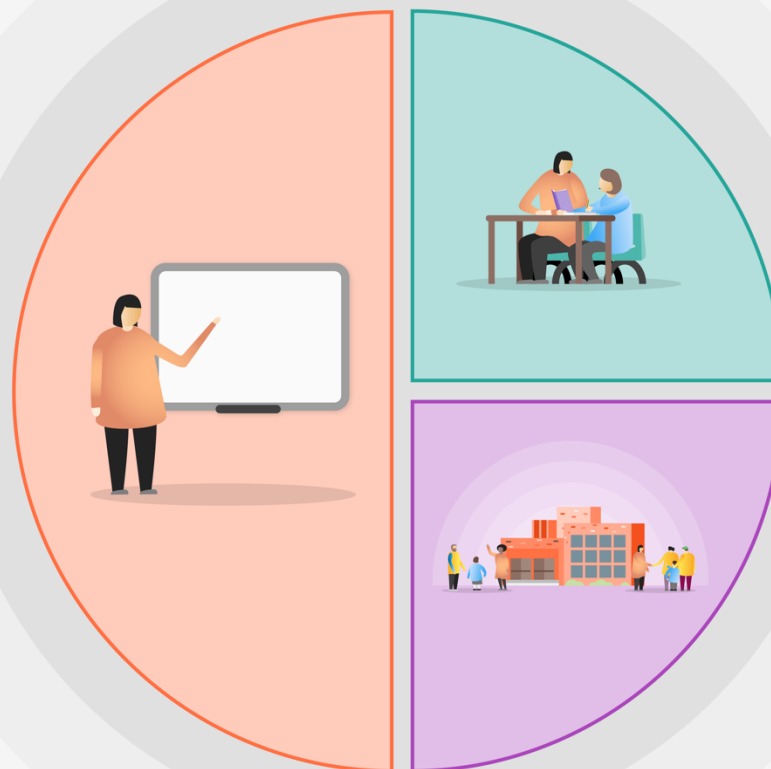


1 Teaching

- Quality first teaching supported by baseline evidence and informed CPD for teachers and support staff.
- A broad and engaging curriculum that focuses on vocabulary acquisition and expressive language.
- Phonics baseline and bespoke CPD to support high quality teaching in all groups and consistency.
- Curriculum 'essentials' for Reading, Writing and Maths are taught/revisited across wider curriculum subjects. Key stage one- EYFS development matters are covered and secured for individuals as required.
- A blended EYFS/NC approach to subject teaching to ensure that coverage is met and progression is clear and achievable.
- Maths lead to develop a Maths Mastery approach across academy.



2 Targeted academic support

- Same day in class intervention.
- PP support in addition from FSW within forest school and class routines.
- Specific language intervention programme in class.
- Specific intervention programmes based on baseline data and tracking.

3 Wider strategies

- Extensive outdoor learning in provision.
- PPA cover within bubbles with familiar staff.
- Lunchtime outdoor dance club and enrichment.
- Skills Builder – Careers Project principal
- 'A Reading school' Phonics CPD implementation- New library EYFS lead's project.
- PP project- Deputy Principal.