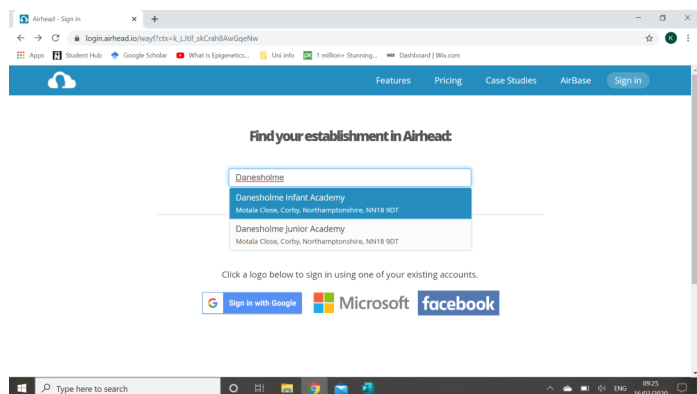


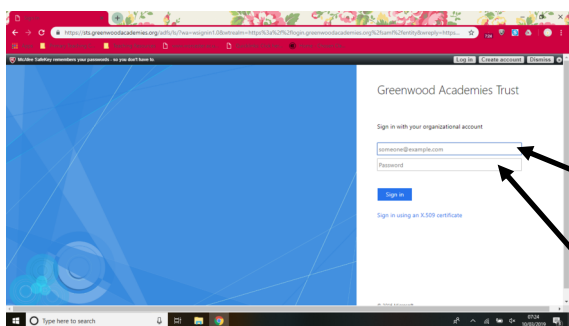
Student Guide—How to access the school system from home



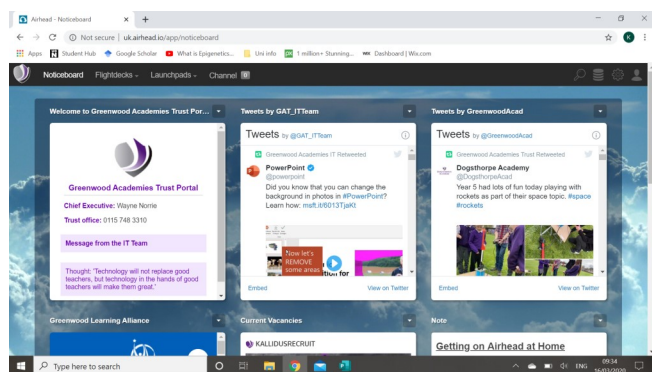
Open your browser, and search for :
Airhead.io
This should bring you to this website.
Click the sign in/ log in button.



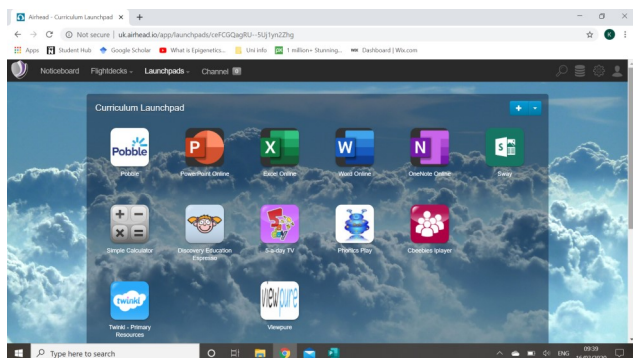
From this next page, you will need to find our school.
Begin typing
Danesholme Infant Academy
and select it from the dropdown box



You will need to type in your school email and password and type it into the boxes as shown
For GDPR reasons these details cannot be public. Your child will have been given a letter with their login information. If you are unsure of this please email admin@danesholmeinfantacademy.org and we will be happy to help.



At the top of the page hover over launchpad and select your child's launchpad from the list. It will be either EYFS, Year 1 or Year 2.



You can then click on the apps which will redirect you to different educational activities.
You can also log on to airhead using a tablet the same way using the tablet's internet browser.